

ΑΓΣ



BUILDING THE FUTURE OF GAMMA CHAPTER

The Campaign for Alpha Gamma Sigma

THE UNIVERSITY OF NEBRASKA-LINCOLN



Bob Gestring,
Chapter President -
1988, Gamma 497

“When each of us were initiated into Alpha Gamma Sigma Fraternity we pledged to perpetuate the thirteen principles of our sacred brotherhood. Now is your time to once again exercise the important principle of ‘Sacrifice.’ We realize that each of you have a multitude of existing financial commitments to family, friends, and religious or community organizations and that an additional financial obligation may be a significant sacrifice for you. However, it is a shared commitment that we must all now honor in the form of a donation to this building fund. The future viability of our brotherhood depends upon each of us doing our part to continue the legacy of Alpha Gamma Sigma Fraternity.”



Rick Gestring,
Chapter President -
1986, Gamma 450



OUR PROUD HISTORY



ALPHA GAMMA SIGMA GAMMA CHAPTER FOUNDERS

Front row, from left: Kay DonWiggins, Jerry Jensen, Stan Eberspacher, Phil Miller, Al Bell, Charlie Watson, and Dale Filkins.

Middle row: Dick Jiskra, Donald Sander, Maurice Norton, Vern Jacobmeier, Carroll French, Don Lees, Dale Van Vleck,

Lloyd Lathrop, and Art Kuhl. Back row: Don Fitz, Lee Nielsen, Jack Stammer, Gerald Schiermeyer,

Merton "Cap" Dierks, Boyd Stuhr, Chuck Schuerman, and Norm Reed.



On November 7, 1953, 24 men from the Ag Men's Club initiated as charter members of Gamma Chapter of Alpha Gamma Sigma Fraternity in Lincoln, Nebraska. Assistant Dean Hixon from the College of Agriculture, with encouragement from Beta Chapter alumnus Donald R. Warner, served as their chapter advisor during the colonization period.

This year we celebrate 65 years in which Alpha Gamma Sigma has played a pivotal role not only in the community on East Campus, but as leaders among the Greek community at the University of Nebraska-Lincoln. Our founding fathers established a culture of men who came primarily from agriculture-related backgrounds with strong work ethic, which is still alive and well today. Today's chapter takes pride in this culture as 70% of the active membership comes from an ag-related background, and history continues to repeat itself as

they strive to achieve high academic excellence, leadership positions on campus, and involvement in the community. Over 1,000 initiates have joined Gamma Chapter, where they have established lifelong friends, professional/personal networking opportunities, and gained leadership skills in the process. Some of our best University of Nebraska memories can be traced back to our Alpha Gamma Sigma experience.

Many of our alumni have graduated and gone on to successful and distinguished careers in agriculture, animal science, banking, law, medicine, and countless other endeavors, and the common bond of our brotherhood remains true through our shared principles and values. Most of our chapter's success can be traced back to the sacrifice, dedication, and vision our founders created in the fall of 1953. These 24 men had a vision for our future.



THE GAMMA CHAPTER TRADITION CONTINUES



Recruitment Strength

- Fall 2017: 80 brothers, with 60 living in the house
- Fall 2018: 85 brothers, with 68 living in the house
- 21 seniors (three living in)
- 21 juniors (all living in)
- 19 sophomores (all living in)
- 6 first-year sophomores (all living in)
- 17 freshmen (all living in)

Chapter and Individual Achievements

- Gamma Chapter has ranked in the top 10 for GPA the past five semesters in a row
- Spring 2018 GPA – 3.188
- Non-Greek male GPA – 2.934
- American Degree recipients at the 2018 National FFA Convention – **Nathan Hatterman '17**, **Jake Judge '17**, **Drew Schaad '17**, and **Jared Stander '17**
- 2018 University of Nebraska Homecoming king (elected by student body) – **Gage Hoergmeyer '15**, **Γ1004**
- National FFA Convention 2018 Star in Agribusiness finalist – **Aaron Deunk '17**
- **Tyler Marotz '15** nominated for 122nd Aksarben Coronation and Scholarship Ball (third consecutive year for ΑΓΣ)
- Mortar Board inductees in spring 2018 (after a five-year lapse) – **Gage Hoergmeyer '15**, **Γ1004** and **Kyle Upp '15**, **Γ1006** (Legacies: Father **Greg Hoergmeyer '87** of Herman, NE, and Grandfather **Merton "Cap" Dierks '53** of Ewing, NE)

Philanthropy Impact

- BBQ Bash for the Leukemia and Lymphoma Society
- Milkshakes for MS benefitting the National Multiple Sclerosis Society - In honor of **Daryl Warday '86**, **Γ510**
- Dance Marathon for Children's Miracle Network
- Balloon Bash for Nebraska Special Olympics

Service to Campus and Community

- Echo Neighborhood Association
- Trash cleanups, snow removal, bagging leaves
- Nebraska Agricultural Youth Council
- Nebraska FFA State Officers – six current Gamma members
- American FFA Degree recipients
- Student Government
- Collegiate Farm Bureau



"This campaign is our commitment to the future success of the Gamma Chapter at UNL. The active chapter has pledged \$160,000 as the lead gift to this campaign to ensure alumni we will be good stewards of your investment for our future. We ask all alumni to consider supporting this effort for our continued success, and to provide a safe, attractive, and competitive home at UNL." –Trevor Spath '15, Γ1013

OUR MASTER PLAN

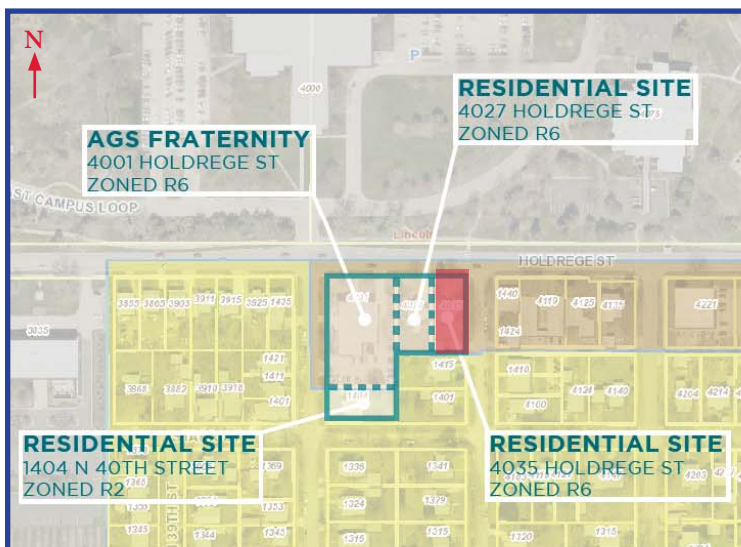
A Home We Will Be Proud Of



A Complete Remodel

Additional site plans being explored with neighbors (south/east properties) and neighborhood association.

For talking purposes only.



4035 Holdrege has been graciously purchased by an alumnus who is working with the alumni association to leverage the possibility of acquiring adjacent properties.

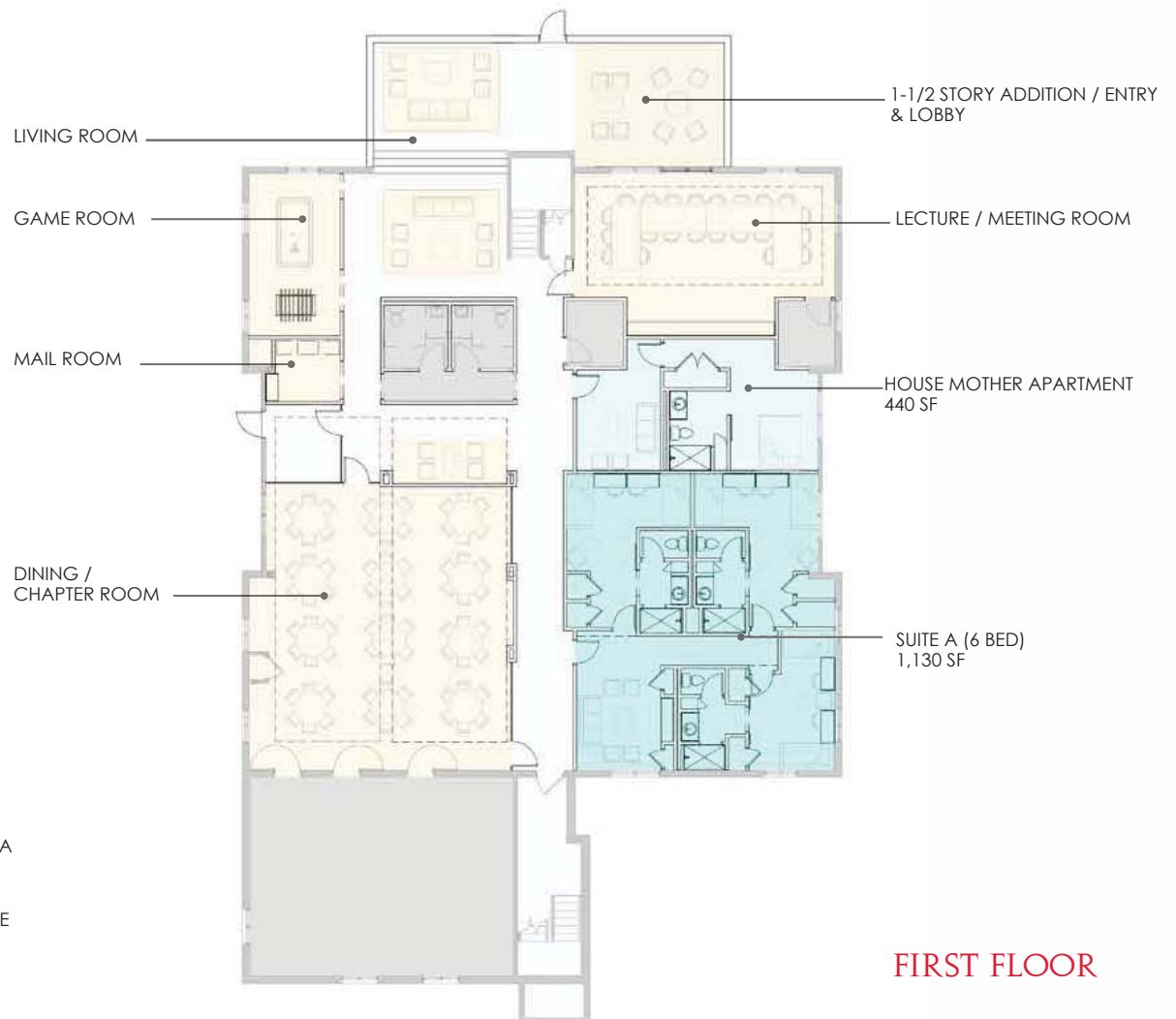
- Update curb appeal – freshen up façade, landscaping, and north side addition
- 1-1/2 story addition/entry and lobby (north side of current house)
- Sleep 60-70 men
- Open floor plan on main levels
- Suite-style sleeping with common areas
- Private showers and restroom facilities
- Dining room to seat 80 active members
- Housemother's apartment
- Study areas and computer labs
- Pitched roof, balcony, and patio space (important to the active chapter)
- Active chapter will be displaced (16-18 months) – alumni association is looking into university housing to accommodate all members and minimize disruption in day-to-day activities

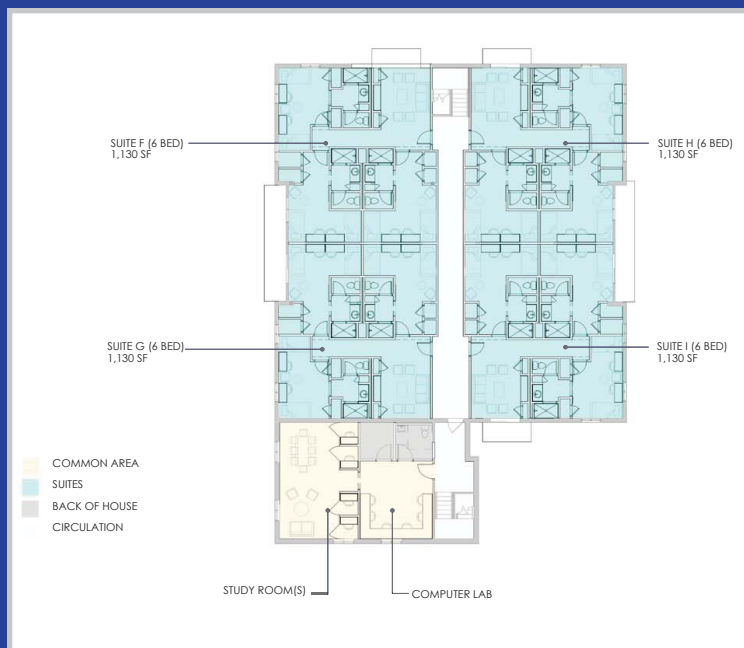
ESTIMATED PROJECT COSTS

Union Bank and Trust Proposed Loan Amount	\$1,500,000
Fundraising Goal	\$2,500,000
TOTAL PROJECT	\$4,000,000



OUR MASTER PLAN





This floor plan illustrates a 3-bedroom apartment. The layout includes a central hallway connecting three bedrooms, each with a bed, desk, and closet. A living room with a sofa and chairs is adjacent to the kitchen, which features a sink, stove, and refrigerator. A balcony is accessible from the living room. The bathroom contains a shower, toilet, and vanity. The plan also shows a central area with a sink and a large window.

1-1/2 STORY ADDITION/ENTRY

SUITE B (6 BED)
1,130 SF

SUITE D (6 BED)
1,130 SF

SUITE C (6 BED)
1,130 SF

SUITE E (6 BED)
1,130 SF

COMMON AREA

SUITES

BACK OF HOUSE

CIRCULATION

SECOND FLOOR



ALPHA GAMMA SIGMA CAMPAIGN LEADERSHIP



HONORARY CHAIRMEN

Merton "Cap" Dierks '53, Γ2 – Ewing, NE
mdierks@gpcom.net



Roy Volzke '54, Γ39 – Lakewood, CO
rdvolzke@gmail.com



CAMPAIGN CHAIRMAN

Gerard Keating '82, Γ437 – Naples, FL
gerard@keatingresources.com



ASSISTANT CHAIRMAN

John Bergmeyer '85, Γ485 – Lincoln, NE
jbergmeyer@ohdbslaw.com



CAMPAIGN BOARD

Eli Thomssen '56, Γ77 – Kalamazoo, MI
elthomssen@gmail.com



Wayne Wood '67, Γ195 – Longmont, CO
mlwwnw@aol.com



Dwight Dam '80, Γ401 – Hooper, NE
damfarms@midlands.net



Rick Gestring '83, Γ450 – Boston, MA
rickgestring@comcast.net



D. Kent Thompson '83, Γ454 – Lincoln, NE
kent.thompson44@yahoo.com



Bob Gestring '85, Γ497 – Phoenix, AZ
bgestring@tkinet.com



Shane Belohrad '87, Γ515 – Omaha, NE
shane_belohrad@ajg.com



Greg Hoegermeyer '87, Γ517 – Herman, NE
hoegfam@midlands.net



Bill Munn '87, Γ520 – Denver, CO
billmunnn@comcast.net



Corey Huck '88, Γ547 – Greensboro, NC
huckco1@gmail.com



Joel Clements '97, Γ699 – Lincoln, NE
joelclements@mac.com



Jerad Hutchens '00, Γ773 – Platte, SD
jerad@summitcontractingsd.com



Jeremy Schrieber '08, Γ898 – Columbus, NE
jschreiber@farmersnational.com



Campaign Treasurer

Matt Bergmeyer '87, Γ523 – Lincoln, NE
mbergmeyer@smalldatatech.com



INVESTING IN OUR FUTURE



Our investment in the future of Gamma Chapter will ensure the continued success of our chapter and will promote opportunities to build an even greater brotherhood throughout recruiting efforts. Today, perhaps more than ever, college fraternities play a relevant role in shaping the lives of young men. Alpha Gamma Sigma provides a home away from home environment that offers our members a solid foundation for their education, expectations from peers for high academic achievement, and the development of leadership and social skills.

The undergraduate men have made a commitment to work hard in maintaining the $\text{A}\Gamma\Sigma$ culture, work ethic, and traditions that have benefited the lives of so many $\text{A}\Gamma\Sigma$ s over the years. Together with our active members, the campaign board and alumni association volunteers are committed to this major undertaking, which will allow us to update our facilities and compete with other fraternities not only on East Campus, but as a top-tier fraternity at the University of Nebraska—something we can all be proud of.

This stage of our project requires assistance from a highly selective group of alumni—like you. We are working to identify brothers who have both the ability and interest to provide major assistance to the project. Remember that each of us benefited from the generosity, work, vision and sacrifice of those who went before us. We all enjoyed the comfort and brotherhood Gamma Chapter provided during our years at the University of Nebraska. Now it is our turn to support Gamma Chapter and ensure that the same, wonderful experience is available to other young men for decades to come.

We urge your thoughtful consideration of this plan. With your support, Alpha Gamma Sigma will continue to provide a quality living environment that supports, nurtures, and develops outstanding young men with the skills and confidence to face an ever-changing world. The commitment we make today cannot be underestimated—it will have a far-reaching effect on the lives of our Alpha Gamma Sigma brothers as we prepare for the future.



UNIVERSITY SUPPORT



OFFICE OF THE CHANCELLOR

Dear Alumni of the Gamma Chapter of Alpha Gamma Sigma,

My congratulations to Alpha Gamma Sigma on the decision to build a modernized Chapter House at the University of Nebraska-Lincoln. The administration of the University of Nebraska-Lincoln has appreciated the leadership your undergraduates have provided the university for over 60 years. Your alumni have gone on to key business, agricultural, professional and academic positions throughout Lincoln, Omaha and the nation.

The Greek system is alive and well at the University of Nebraska-Lincoln. Many fraternities and sororities are planning or have already completed significant renovations or new builds to improve the life safety and educational features of the Greek houses. Obviously, these projects can only happen as a result of support from loyal alumni. Your decision to provide an excellent living and social environment, and first-rate study and meeting accommodations will enhance the overall university experience for our undergraduates.

Greeks remain loyal to their university. A high proportion of leadership in the University of Nebraska Alumni Association and the University of Nebraska Foundation are Greek alumni. I know the importance of the Greek community as I am a product of the Greek system at my alma mater. I know that something about the Greek experience fosters involvement and loyalty.

A strong university depends on strong undergraduates and supportive alumni. Your current support of this important Capital Campaign will help assure that tradition continues.

Sincerely,

Ronnie D. Green, Ph.D.
Chancellor

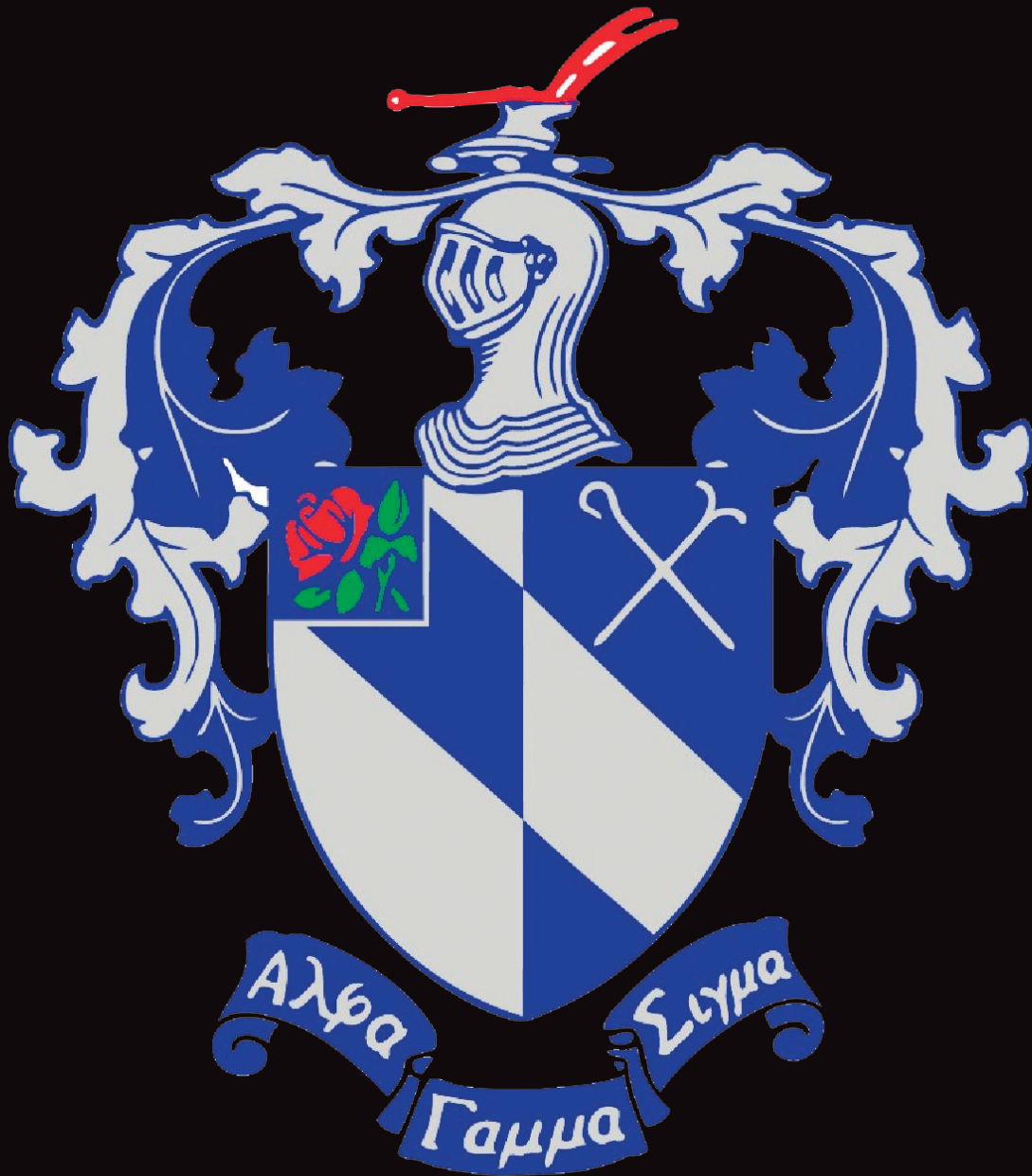
OUR BIGGEST COMPETITION

Alpha Gamma Rho opened its new, \$6 million facility in 2013 with 75 beds and 53 parking spots on East Campus.



FarmHouse recently opened its doors in fall 2018 with a \$5 million, 80-bed home with 80 parking stalls on East Campus.





COOPERATION ◀ HEALTH ◀ HONESTY
FELLOWSHIP ◀ LEADERSHIP ◀ OBEDIENCE

PERPETUATION OF MORALITY
SELF-RELIANCE ◀ SPORTSMANSHIP

SACRIFICE

SCHOLARSHIP ◀ SOCIABILITY ◀ TEMPERANCE