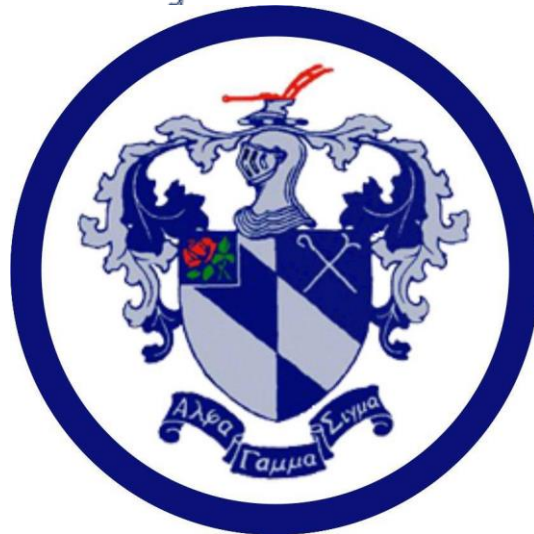



# ALPHA GAMMA SIGMA FRATERNITY

A Brotherhood Experience for the Next Generation of Fraternity Men



# WHY CHOOSE ALPHA GAMMA SIGMA?





**MODERN LIVING**  
**UNPARALLELED LEADERSHIP**  
**ACADEMIC EXCELLENCE**  
**MAKING A DIFFERENCE**



# Modern Living and Lifestyle





# LIVE IN STYLE, WITH GUYS LIKE YOU

- The best living amenities of any fraternity on campus
  - Apartment style floor plans
  - Individual showers and rest rooms
  - Separate washer/dryer, refrigerator, and microwave in every unit
  - Unique queen size bed/loft/study unit
  - Privacy, safety, and personal space
- Live with brothers that fit your lifestyle
  - Values
  - Brotherhood
  - Commitment





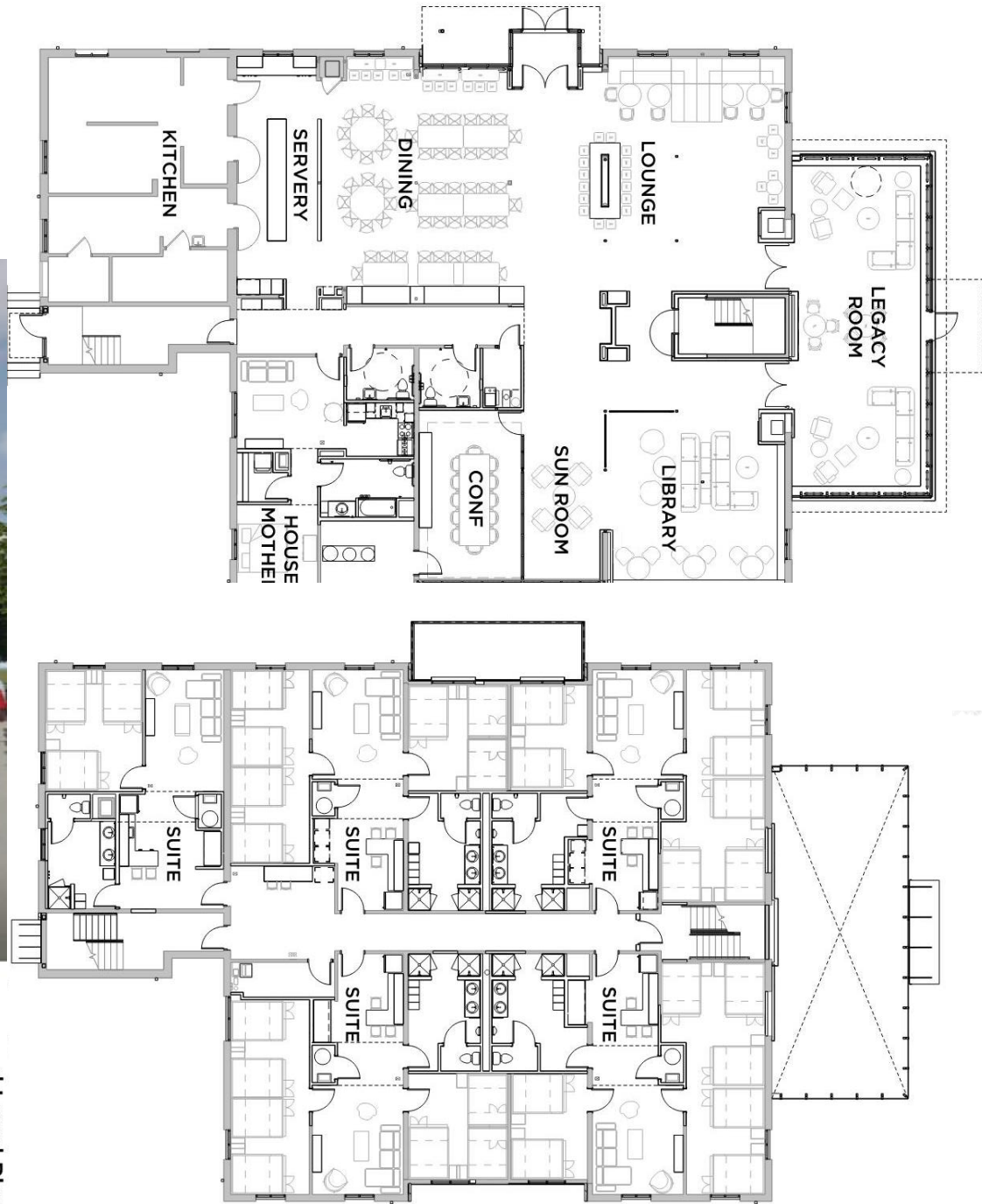




**Proposed Exterior**

Alpha Gamma Sigma Fraternity | 2020.03.14 | 18053

Alpha G



**d Level Plan**  
2020.03.14 | 18053

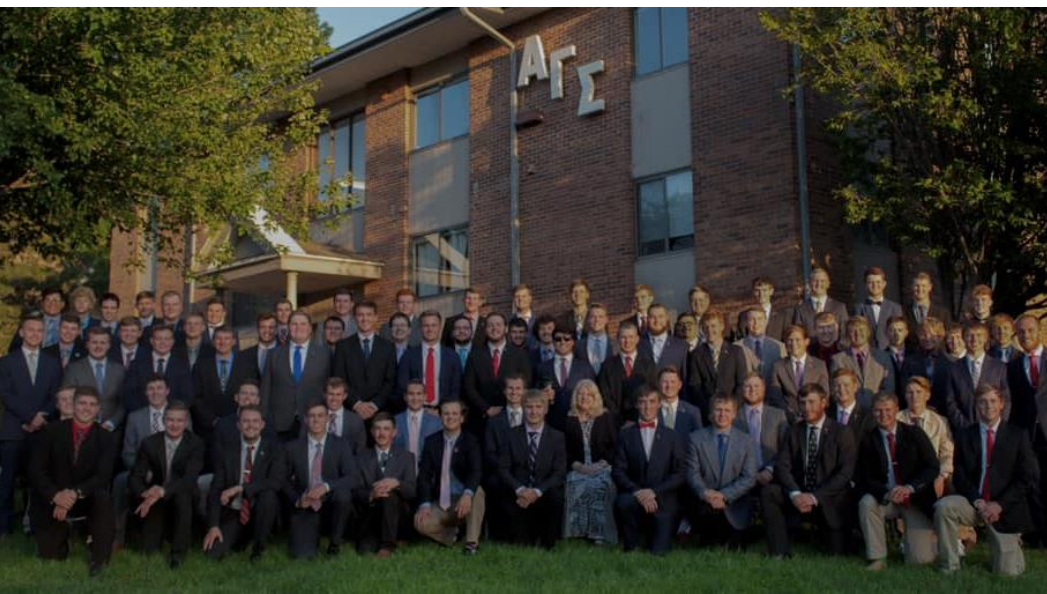






**1635 R Street**  
**Alpha Gamma Sigma Fraternity**







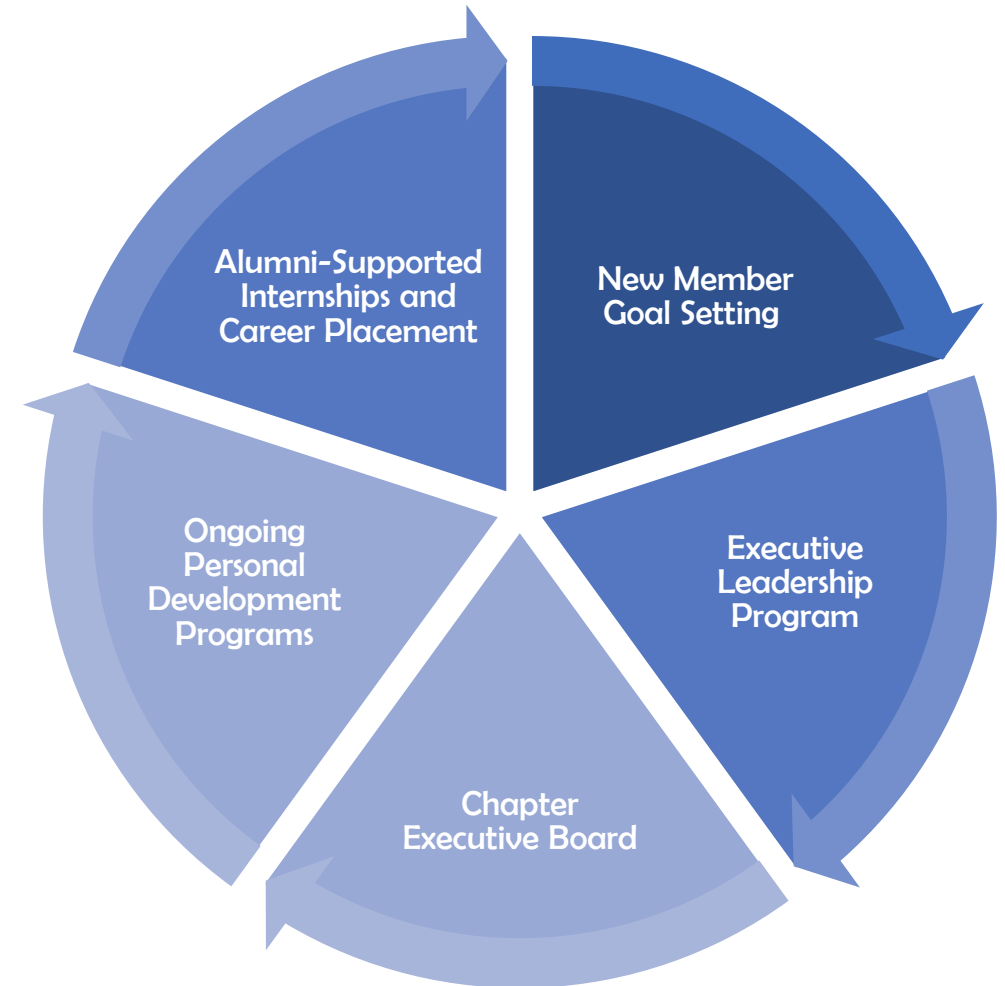


# Unparalleled Leadership

# THE ALPHA GAMMA SIGMA LEADERSHIP LEGACY

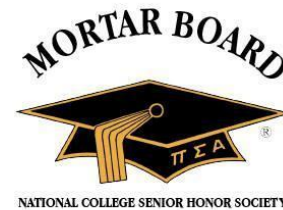
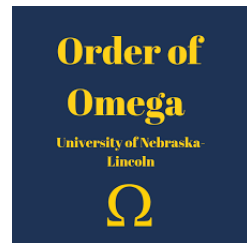
BECOME A LEADER FOR LIFE

*Preparing men for life by;  
coming together as scholars,  
living as brothers,  
becoming leaders of  
tomorrow.*





# Campus Involvement









A dark blue, irregular ink splatter or blotch serves as the background for the text. The splatter has a textured, painterly appearance with various shades of blue and white, suggesting ink on a light surface. The edges are jagged and feathered, with some smaller droplets visible around the main shape.

# **Academic Excellence**

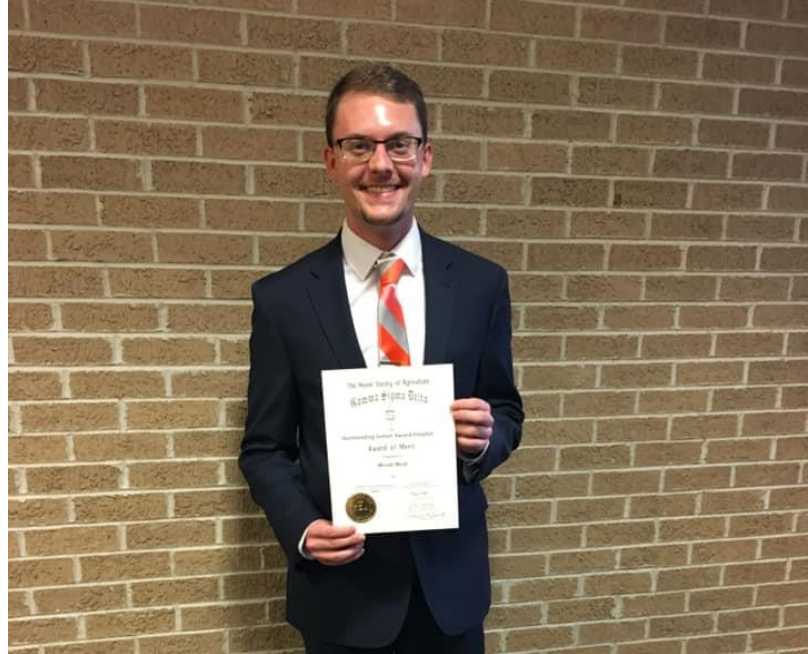


*Do you qualify for  
our New Member  
Scholarship of  
\$1,000?*

# **SUCCEED IN THE CLASSROOM AND IN LIFE**

- Chapter House GPA
  - Ranked 5<sup>th</sup> highest fraternity
- Academic Support
  - Personal academic tutors
  - Scholarship awards and incentives
- Career Opportunities
  - Summer Internships
  - Career coaching
  - Job connections on campus
- Alumni Support
  - National and International








# **Making a Difference**





*"We as students and brothers of Alpha Gamma Sigma, a professional Fraternity of agricultural heritage, in order to promote better fellowship, to inspire higher ambitions, to provide a fraternalistic environment for succeeding students, and through each others' associations to better develop those talents that God has given us do adopt for our organization, hereafter referred to as the Fraternity"*

## **BE A PART OF SOMETHING BIGGER THAN YOURSELF**

- Join a Purpose-Driven Fraternity
- Philanthropic Events
  - Multiple Sclerosis Foundation
  - Nebraska Special Olympics
  - Nebraska Children's Museum
- Social Interaction and Functions
- Athletics and Physical Fitness
- Faith and Religious Affiliation Involvement







# Principles

Cooperation

Health

Honesty

Fellowship

Leadership

Obedience

Perpetuation  
of Morality

Self-Reliance


Sportsmanship

Sacrifice

Scholarship

Sociability

Temperance



**MODERN LIVING**  
**UNPARALLELED LEADERSHIP**  
**ACADEMIC EXCELLENCE**  
**MAKING A DIFFERENCE**



## **BEST VALUE FRATERNITY EXPERIENCE**

**Room and Board: \$8,400**

**Leadership and Social: \$1,100**

**\$9,500 Total (\$8,500 with Scholarship)**

# Connect With Us



Wyatt Hubbard  
Assistant Rush  
308-440-5369



Mikael Harrop  
Rush Chairman  
308-216-0947



Logan Anderson  
Assistant Rush  
402-230-0990

## Website

[www.ags.unl.org](http://www.ags.unl.org)

## Instagram

[www.instagram.com › ags\\_unl](http://www.instagram.com/ags_unl)

## Twitter

[twitter.com › ags\\_gamma](https://twitter.com/ags_gamma)

## Email

[alphagammasigmafraternity@gmail.com](mailto:alphagammasigmafraternity@gmail.com)