



Alpha Gamma Sigma House Tour & Introduction

Alpha Gamma Sigma Home



3455 Holdrege

Conveniently Located Near East Campus



East Campus Fraternity Sq. Ft. Comparison



Alpha Gamm Sigma



- Building—31,663 sq. ft.
- Parking lot—64,517 sq. ft.

Farmhouse



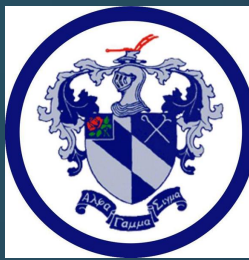
- Building—30,994 sq. ft.
- Parking lot—52,766 sq. ft.

Alpha Gamma Rho



- Building—18,622 sq. ft.
- Parking lot—18,761 sq. ft.

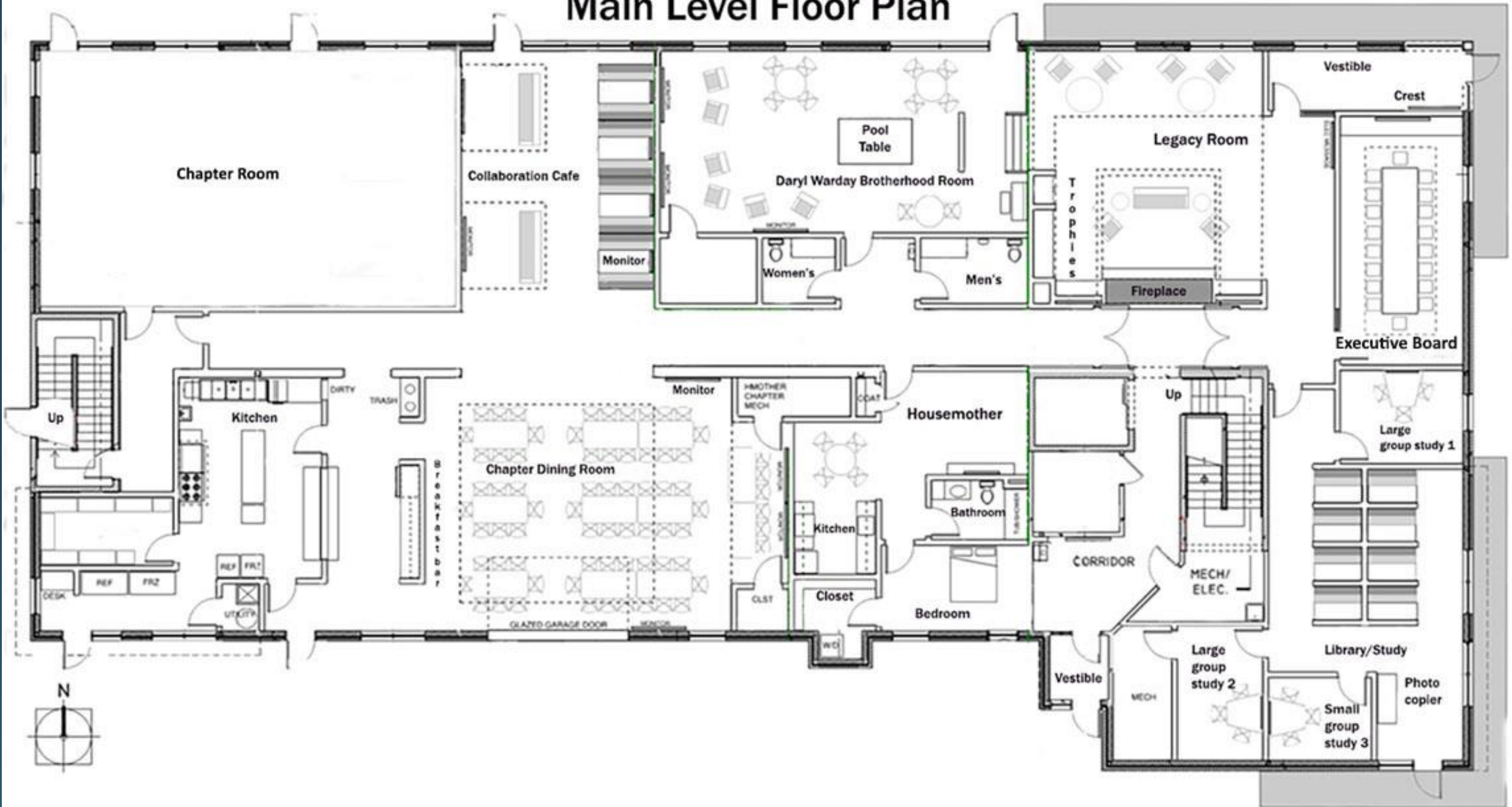
Introducing the Housemother



Introducing Pat Madsen and her husband John. Mom Pat has an apartment in the house, and serves as a mentor and a source of guidance. John is a business man who lives in Stuart, but joins her on weekends. Mom Pat's supportive presence helps house members navigate college life, academics, and personal challenges. Alpha Gamma Sigma is fortunate to have Mom Pat as our housemother.



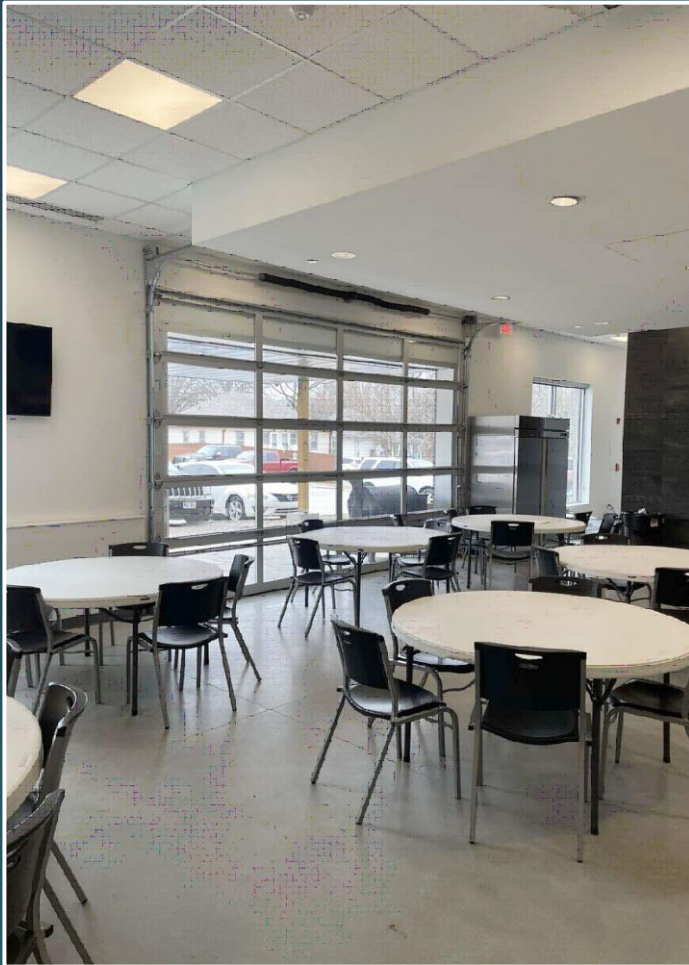
Main Level Floor Plan



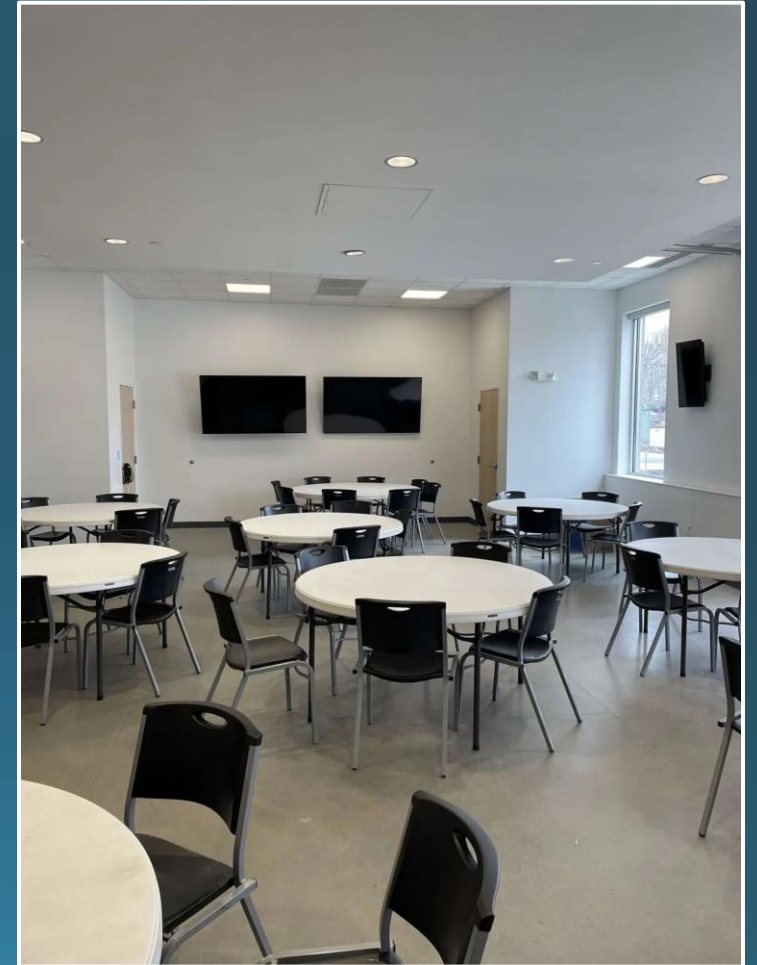
Chapter Room



Dining Room & Patio



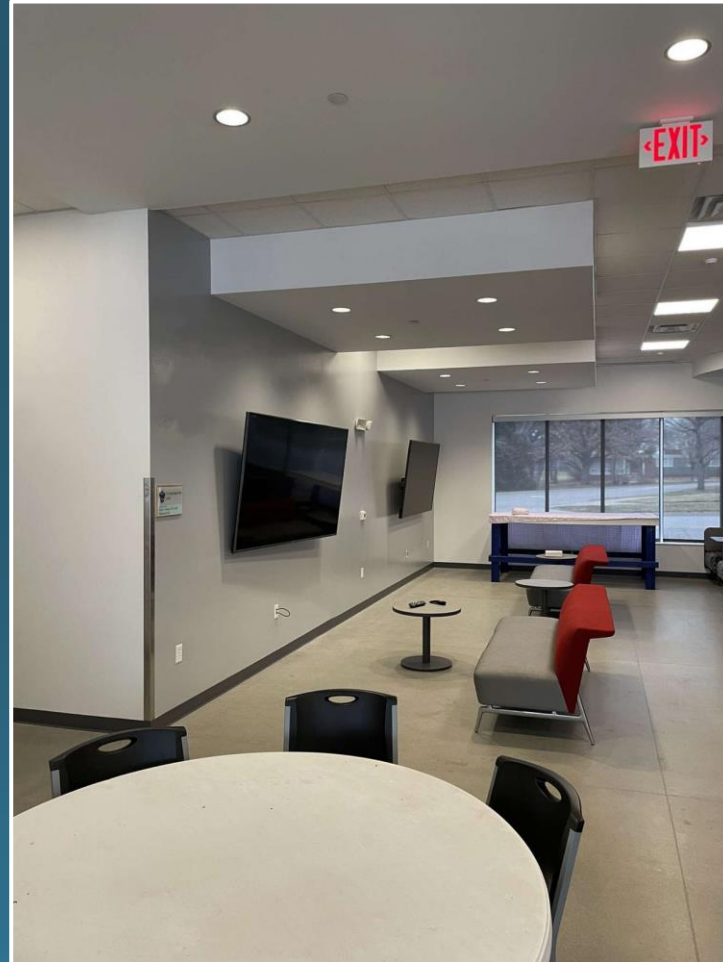
There is a roll-up door in the dining room leading to a patio for outdoor dining and other activities.



Collaboration Café



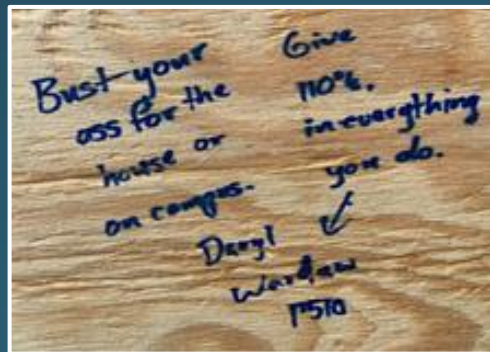
The collaboration café is adjacent to the dining room, and a place where men can gather in smaller groups to relax and study.



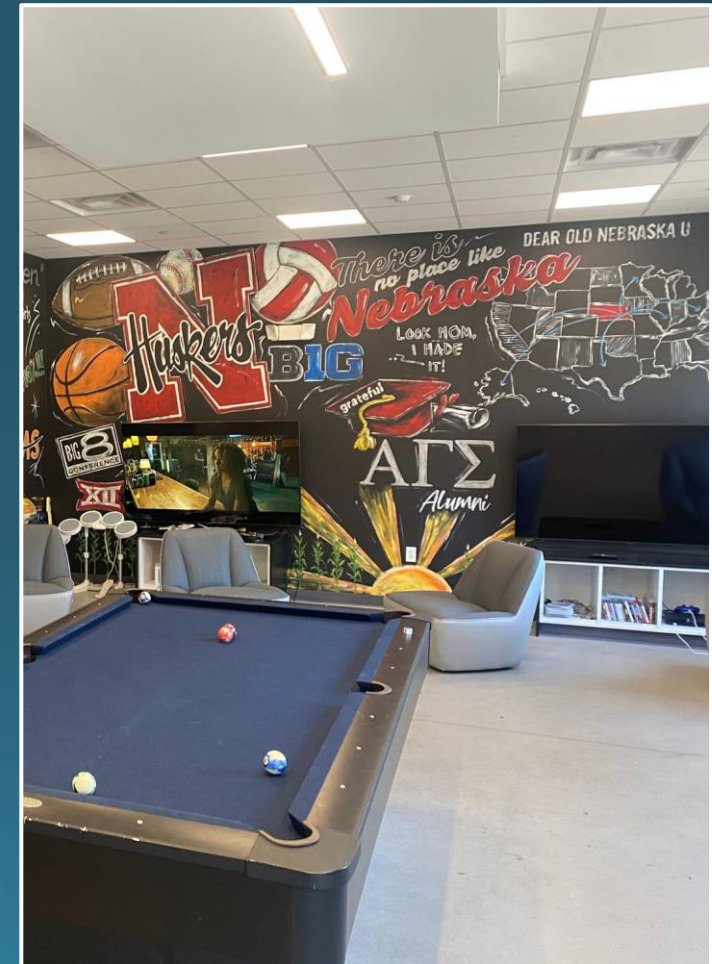
Daryl Warday Brotherhood Room



Daryl Warday was from Hyannis, NE, and pledged Alpha Gamma Sigma to associate with like-minded individuals who shared similar values, interests and goals. He was a loyal member, and a true leader within the fraternity and on campus. His leadership and guidance had a significant impact on everyone he met and with whom he associated. Daryl married his college sweetheart following graduation, and was enjoying a successful career when his life was cut short by multiple sclerosis (MS). A room has been dedicated to his memory, and the wall mural not only depicts Daryl's experiences while a student, but all members of AGS.



This quote was found inscribed on a piece of plywood that was discovered during a remodeling project.



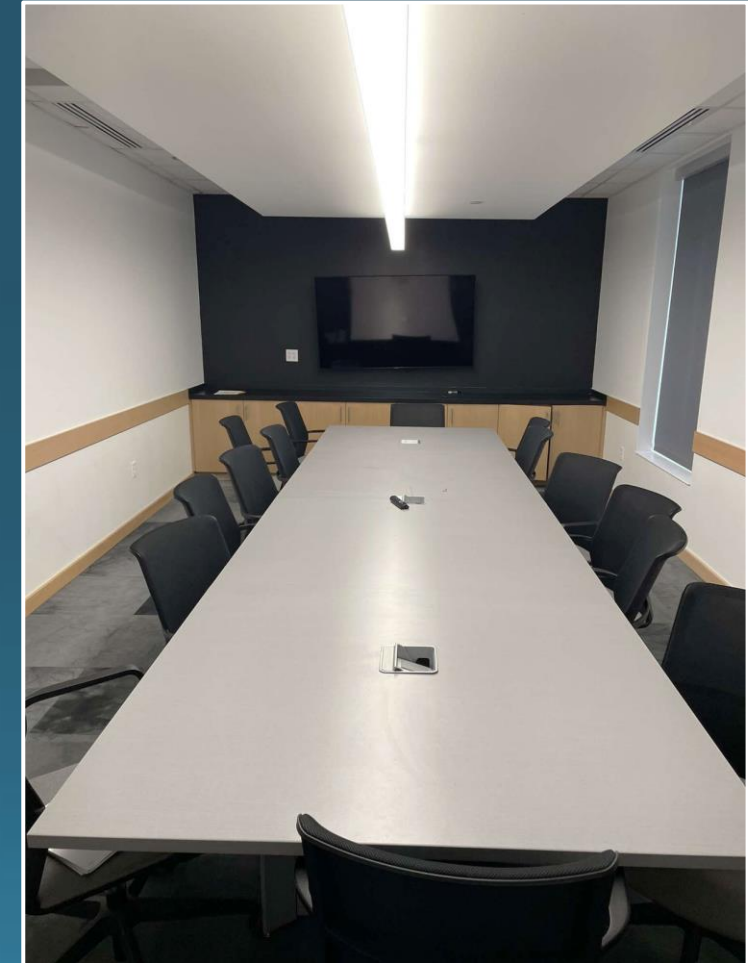
Legacy Room



Executive Board

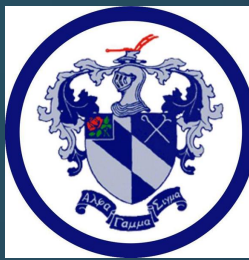


Executive Board

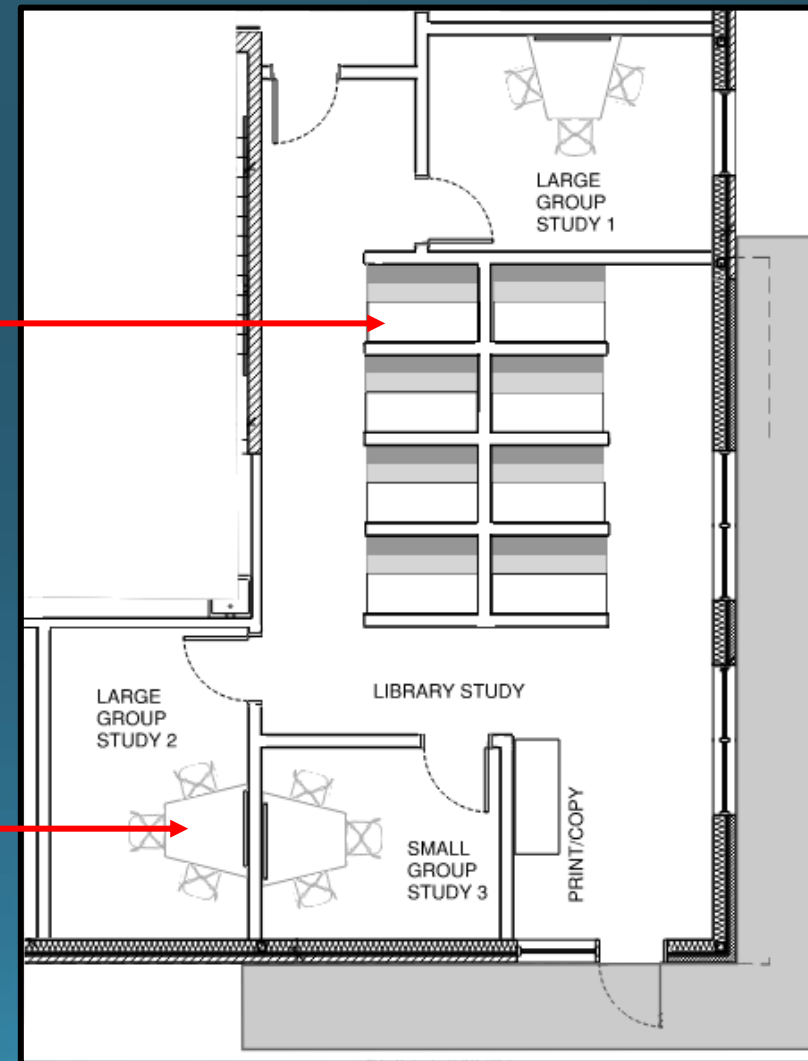
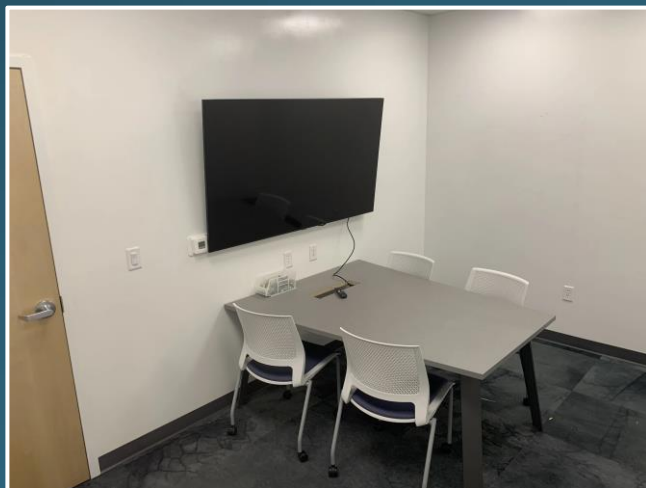


Executive Board Meeting Room

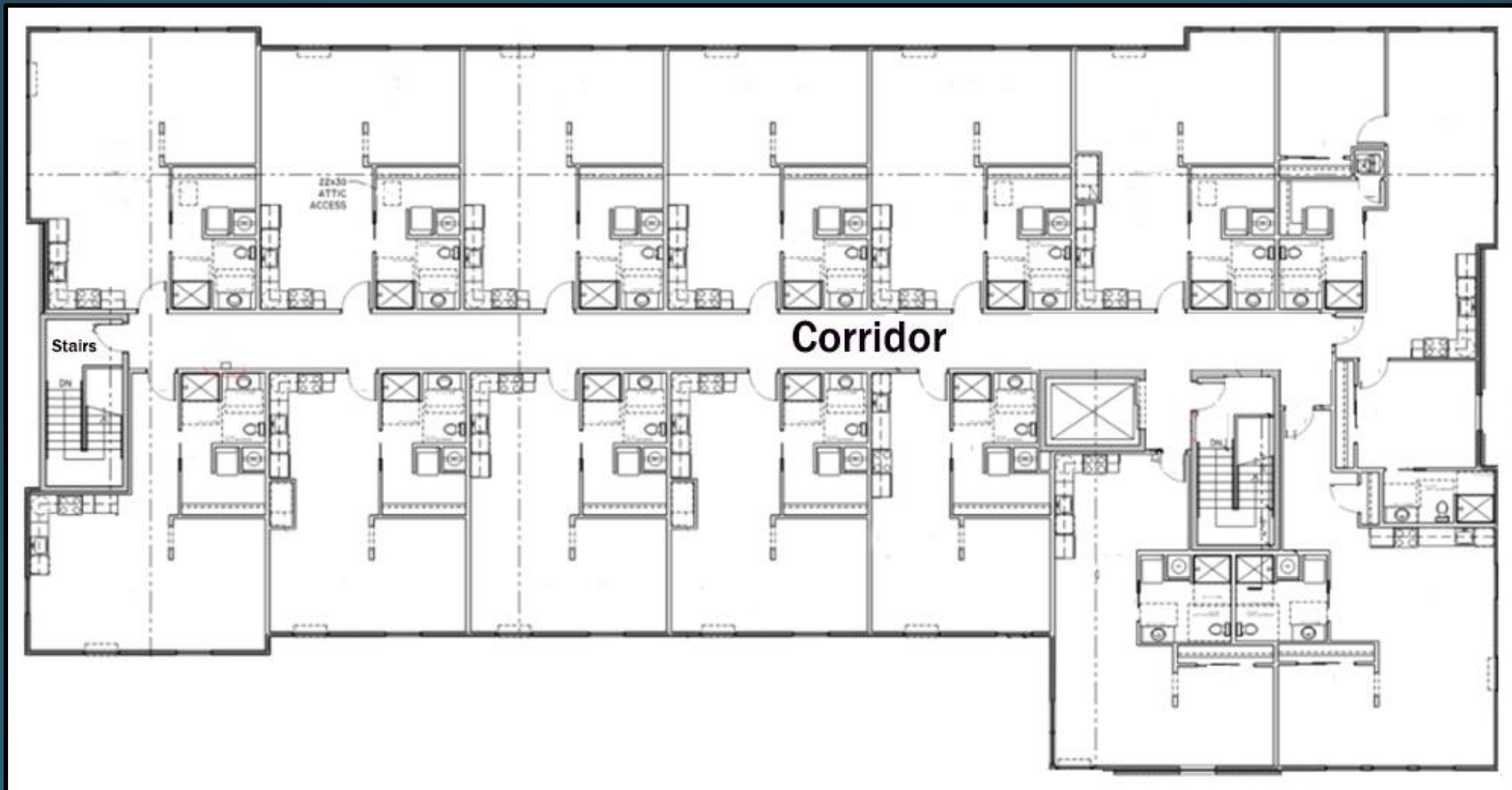
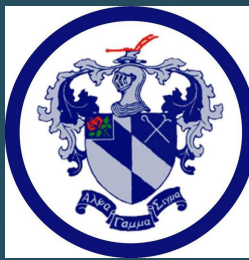
Library/Study Area



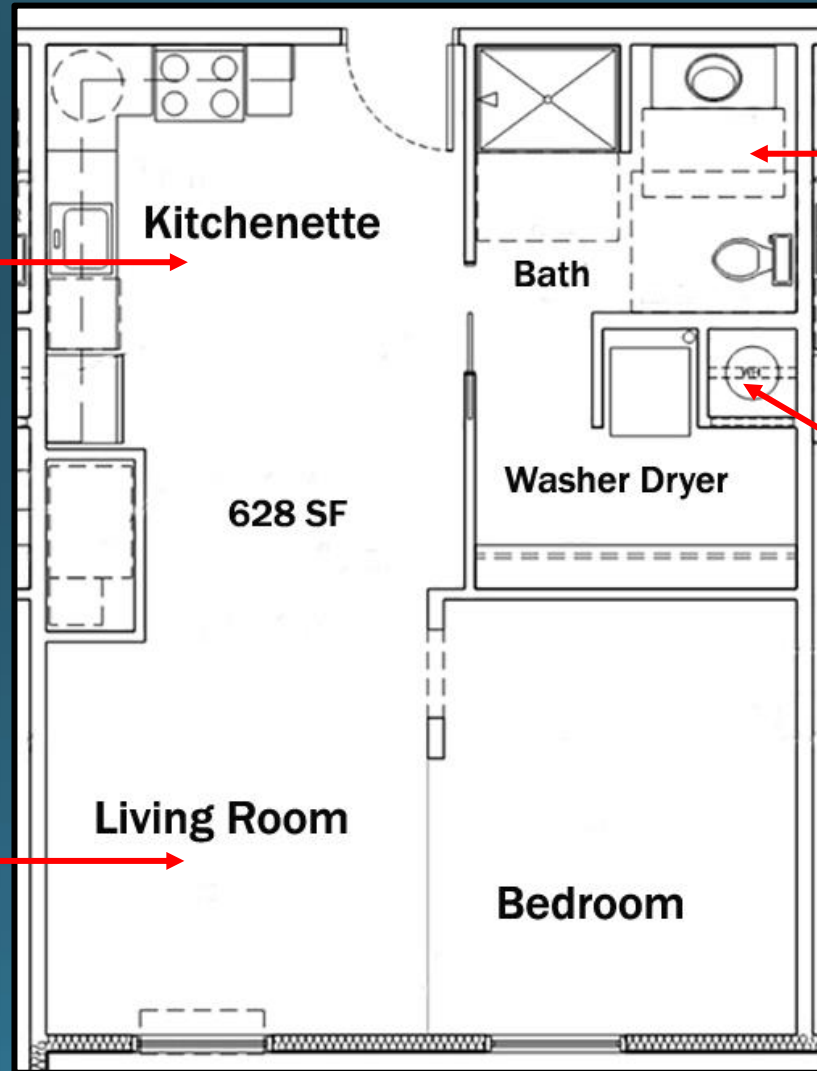
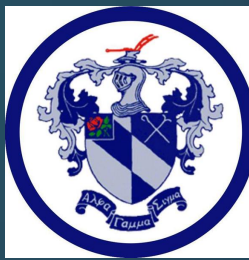
Each cubicle has a flat screen monitor connected to the Internet to work on projects.



Living Units Floor Plan



Typical 2-Man Living Unit



Bedroom Furnishings



AGS Campus Activities & Philanthropy



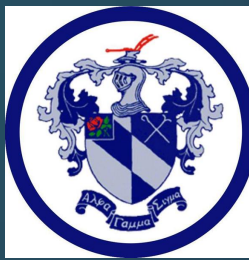
Die Tournament
Vine Street Fields
Saturday, April 20th
1:30-6 pm
\$10 per person



Paved Parking Lot With 75 Spaces



Rush Chairmen



Seth Wert
Sethwert1102@gmail.com
(308) 940-3768



Nathan Bell
Nathanbell88@gmail.com
(402) 480-8363