



# Alpha Gamma Sigma House Tour & Introduction

# Alpha Gamma Sigma Home



3455 Holdrege



# Conveniently Located Near East Campus





# East Campus Fraternity Sq. Ft. Comparison



Alpha Gamm Sigma



- Building—31,663 sq. ft.
- Parking lot—64,517 sq. ft.

Farmhouse



- Building—30,994 sq. ft.
- Parking lot—52,766 sq. ft.

Alpha Gamma Rho



- Building—18,622 sq. ft.
- Parking lot—18,761 sq. ft.

# Introducing the Housemother



Introducing Pat Madsen and her husband John. Mom Pat has an apartment in the house, and serves as a mentor and a source of guidance. John is a business man who lives in Stuart, but joins her on weekends. Mom Pat's supportive presence helps house members navigate college life, academics, and personal challenges. Alpha Gamma Sigma is fortunate to have Mom Pat as our housemother.





**Main Level Floor Plan**

The floor plan is divided into several functional areas:

- Chapter Room:** A large open space on the left side.
- Collaboration Cafe:** Located between the Chapter Room and the Brotherhood Room.
- Daryl Warday Brotherhood Room:** Features a pool table, several tables with chairs, and restrooms (Women's and Men's).
- Legacy Room:** Contains a fireplace, trophies, and a table.
- Executive Board:** A room with a long table and chairs.
- Study Areas:** Three designated study spaces labeled "Large group study 1", "Large group study 2", and "Small group study 3".
- Kitchen and Dining:** Includes a Kitchen, Chapter Dining Room, and a Breakfast bar.
- Housemother's Room:** Includes a bathroom, kitchen, and closet.
- Bedroom:** A room with a bed and closet.
- Utility and Storage:** Includes a laundry room, storage rooms, and a photo copier.

A north arrow is located in the bottom left corner.

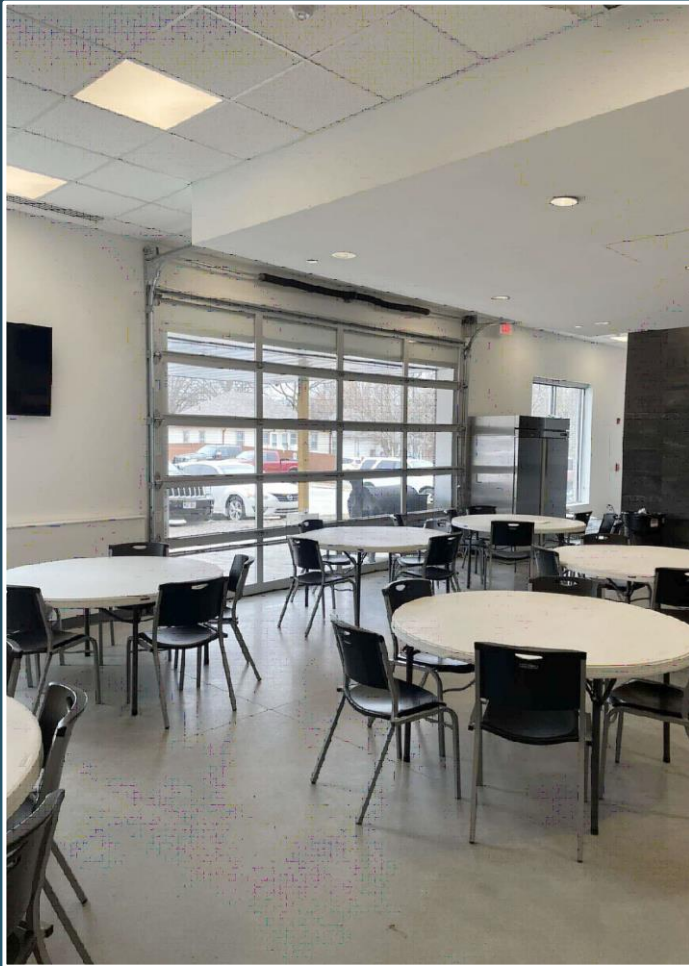


# Chapter Room

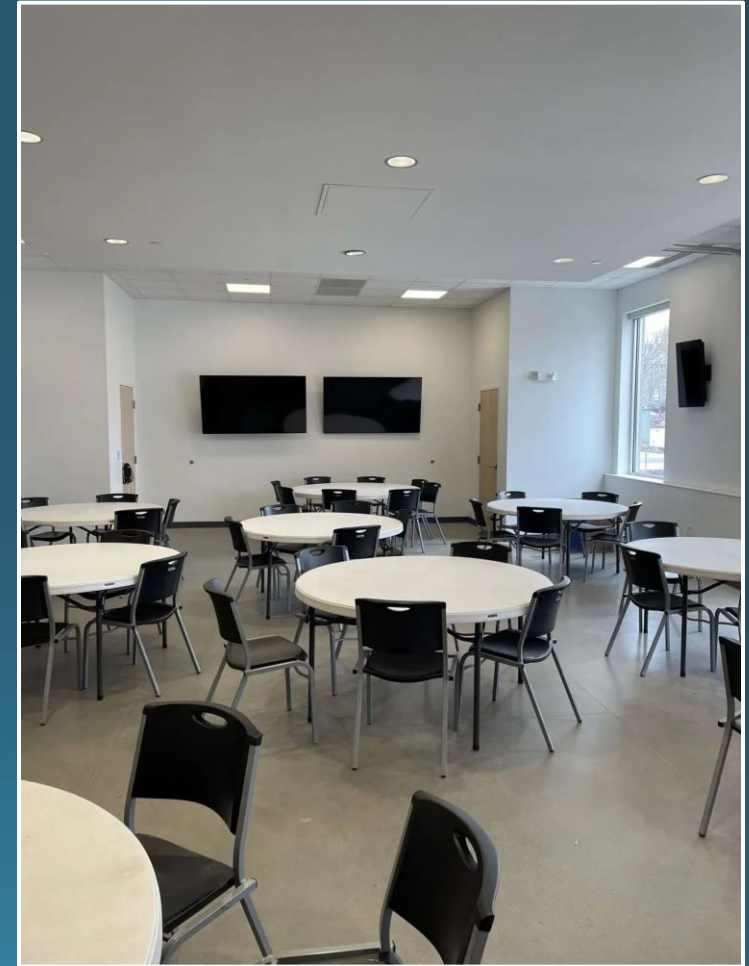




# Dining Room & Patio



There is a roll-up door in the dining room leading to a patio for outdoor dining and other activities.

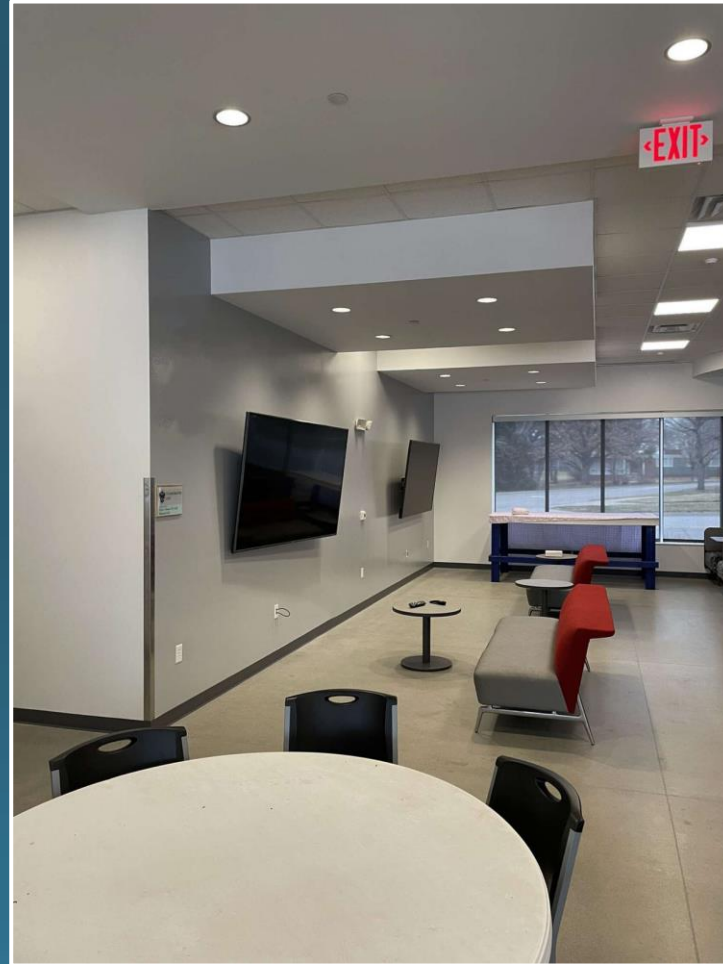




# Collaboration Café



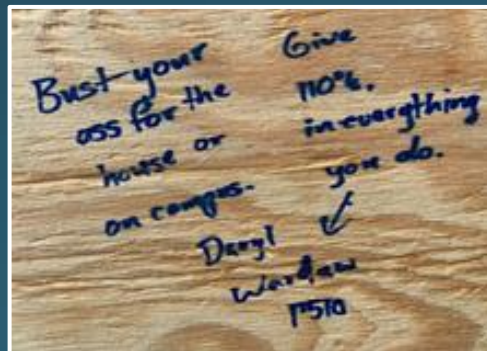
The collaboration café is adjacent to the dining room, and a place where men can gather in smaller groups to relax and study.



# Daryl Warday Brotherhood Room



Daryl Warday was from Hyannis, NE, and pledged Alpha Gamma Sigma to associate with like-minded individuals who shared similar values, interests and goals. He was a loyal member, and a true leader within the fraternity and on campus. His leadership and guidance had a significant impact on everyone he met and with whom he associated. Daryl married his college sweetheart following graduation, and was enjoying a successful career when his life was cut short by multiple sclerosis (MS). A room has been dedicated to his memory, and the wall mural not only depicts Daryl's experiences while a student, but all members of AGS.



This quote was found inscribed on a piece of plywood that was discovered during a remodeling project.





# Legacy Room





# Executive Board



Executive Board



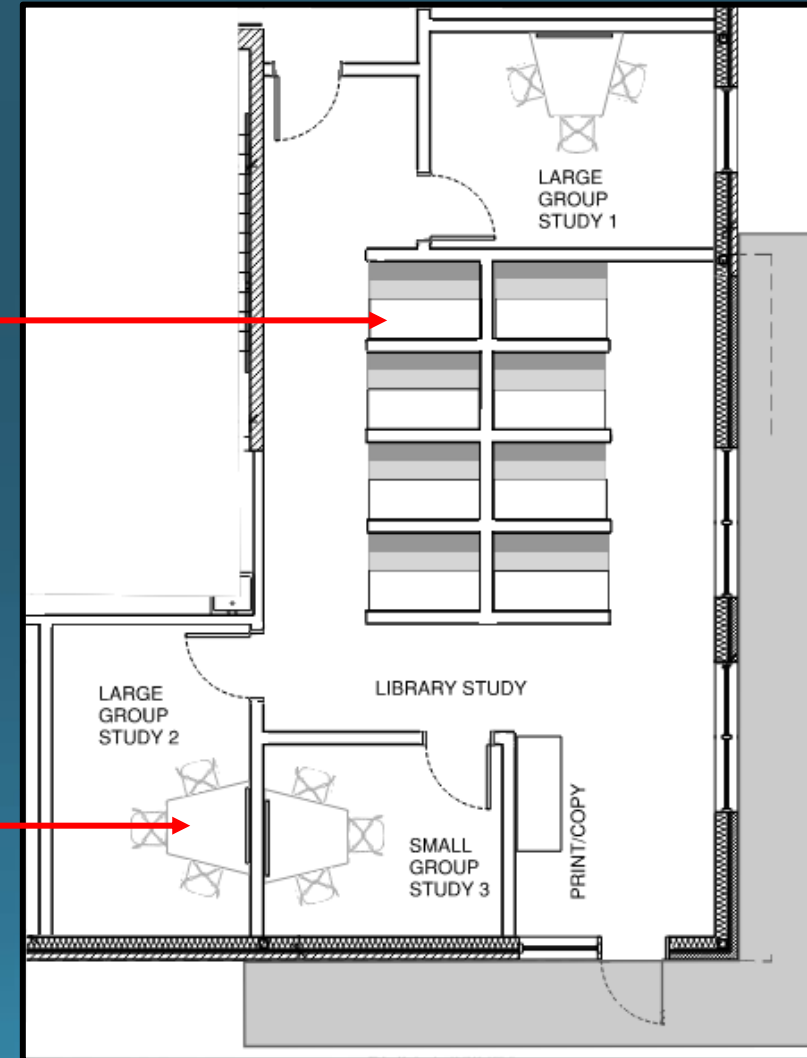
Executive Board Meeting Room



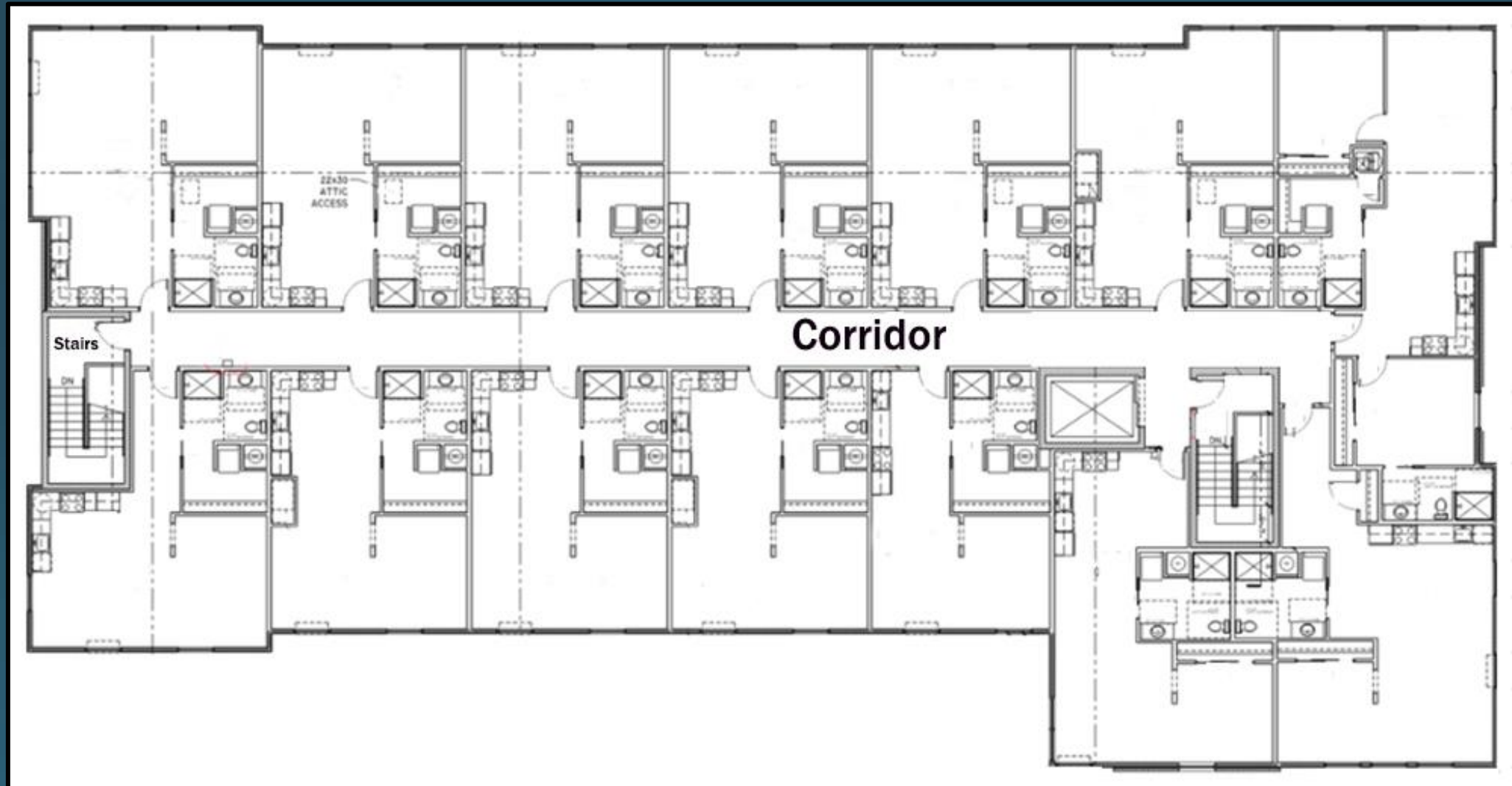
# Library/Study Area



Each cubicle has a flat screen monitor connected to the Internet to work on projects.

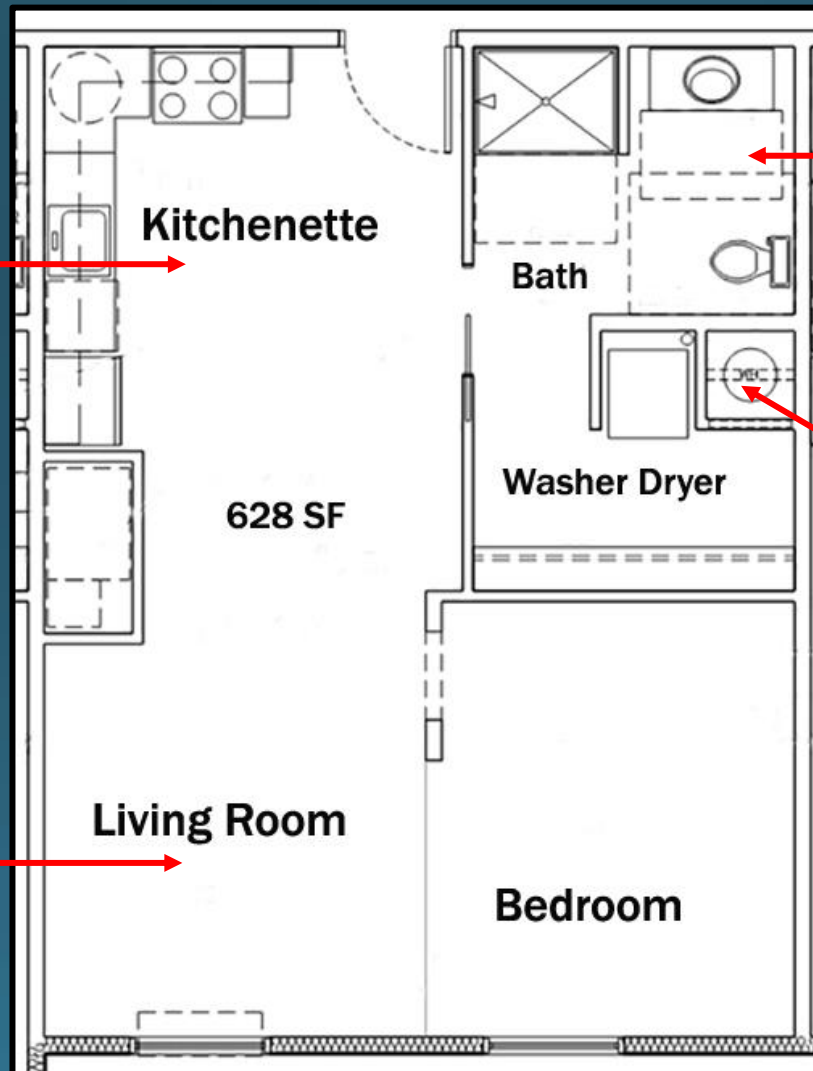


# Living Units Floor Plan

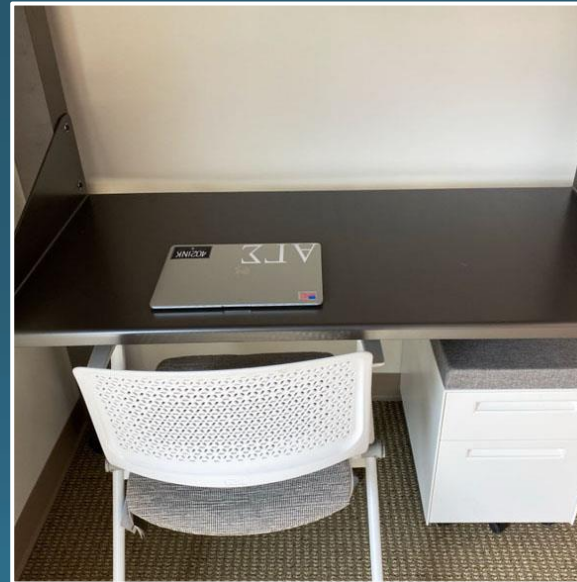




# Typical 2-Man Living Unit



# Bedroom Furnishings





# AGS Campus Activities & Philanthropy



Brothers at UNL Dance Marathon's annual Huskerthon event! AGS helped raise over \$100,000 for Children's Hospital this past year.



# Paved Parking Lot With 75 Spaces





# Gamma Chapter Rush Chairmen



**LOGAN LLOYD**

LOGANLLOYD05@GMAIL.COM

402.350.4414



@LOGAN\_LLOYD\_05

Please contact Logan  
or Sam if you have  
any questions.



**SAM VONSPRECKELSEN**

SVONS02@GMAIL.COM

402.984.0196



@SAMVONS02